















































## Questions 8a & 8b – Culturally Specific Awards

- A **culturally specific community-based organization** is one that:
  - Has a focus on any underserved populations.
  - Is not merely providing services to an underserved population, but is providing culturally competent services designed to meet specific needs of that population.
  - At minimum, has some expertise or demonstrated capacity to work effectively on DV, SA, or STK or acquires that expertise through collaboration with another entity.

## Questions 8a & 8b – Culturally Specific Awards (cont)

- Report culturally specific victim services awards in Question 8a by FFY and category.
  - Also indicate which subgrantees received these awards in your subgrants list.
  
- Discuss these awards in question 8b, for example:
  - Explain if did not meet 10% of victim services awards requirement
  - Describe any awards made to culturally specific organizations that also received sexual assault funds.

## **NEW Questions 9a & 9b – Sexual Assault Awards**

- Report sexual assault set-aside awards in Question 9a by FFY and category.
  - Also indicate which subgrantees received these awards in your subgrants list.
- Discuss any challenges in meeting the 20% set-aside requirement in Question 9b

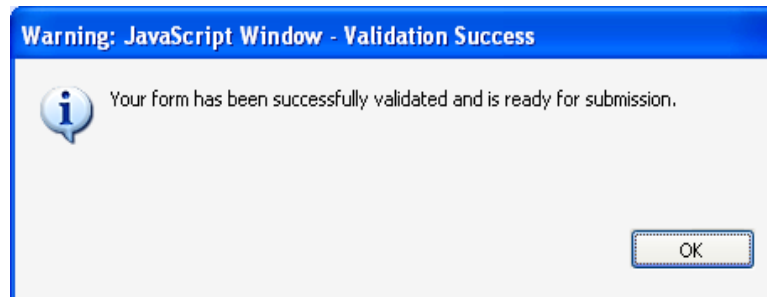
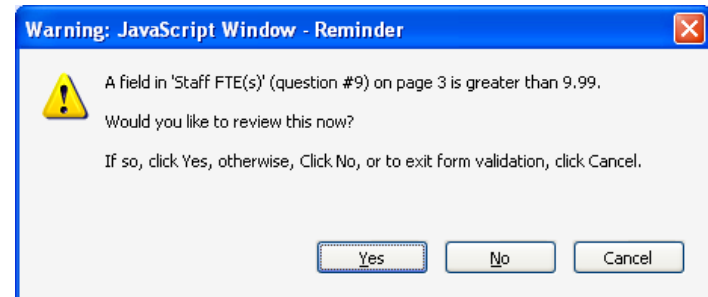
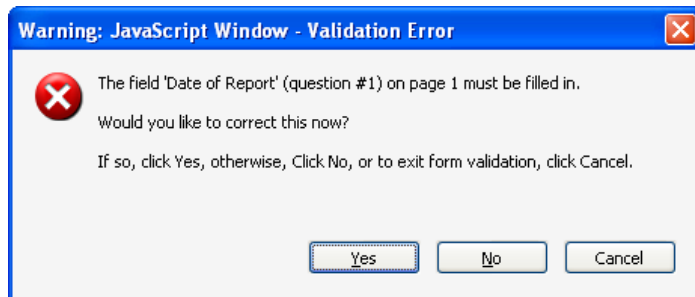


# Narrative

- All Administrators need to answer questions 12 to 18.
- New narrative questions:
  - 13 – Subgrants that were used for incarcerated victims, developing legislation, prevention/education, improving response to victims who have limited access to services due to sexual orientation/gender identity.
  - 14 – Jessica Gonzales Victim Assistants
  - 15 – Crystal Judson Domestic Violence Protocol Program
  - 16 – Prison Rape Elimination Act (PREA)
- Questions 19 to 22 are optional.

# Validating the Form

- Before you can upload your form into JustGrants, you must validate it (“Validate” button on last page).



# Any questions?



# Thank you!

## VAWA MEI

- 1-800-922-VAWA (8292)
- Email: [vawamei@maine.edu](mailto:vawamei@maine.edu)



## Hannah Brintlinger

- Email: [hannah.brintlinger@maine.edu](mailto:hannah.brintlinger@maine.edu)

## Casey Benner

- Email: [casey.benner@maine.edu](mailto:casey.benner@maine.edu)

\*Our offices are working remotely at this time, and reaching us by email (to ask questions or to schedule a phone call) is the easiest way to reach us.